

# SPECTORS

Sensor Products for Enterprises Creating Technological Opportunities in Remote Sensing



## business development dashboard

11

new products

40

new jobs

840

secured jobs

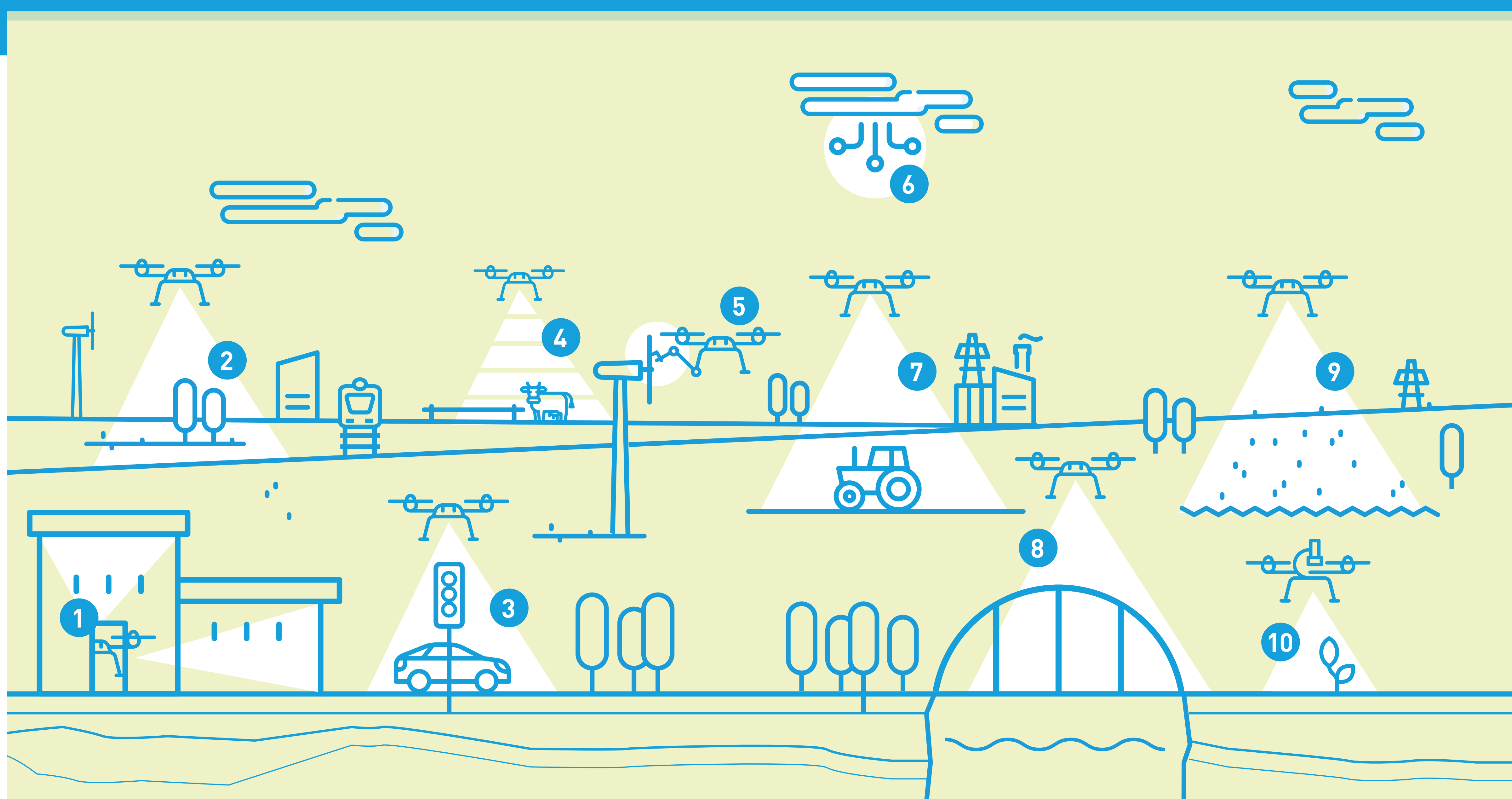
32

partners

10<sup>mio</sup>

investment

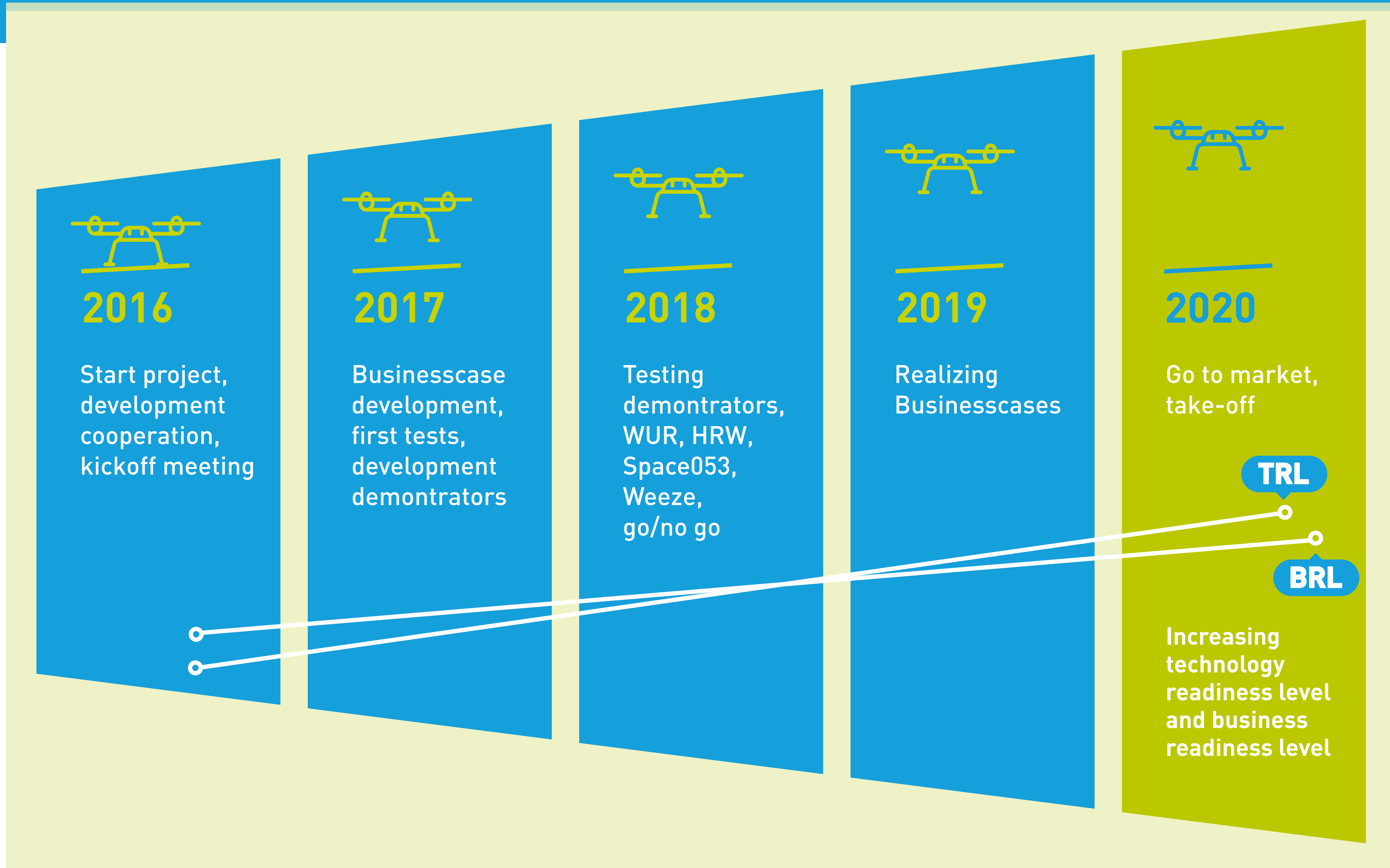
## Dronetechnology



- 1 Positioning System for inspection
- 2 Airborne 3D Land Surveying System
- 3 Radar for Traffic Surveillance
- 4 Airborne Imaging System
- 5 DroneTouch System

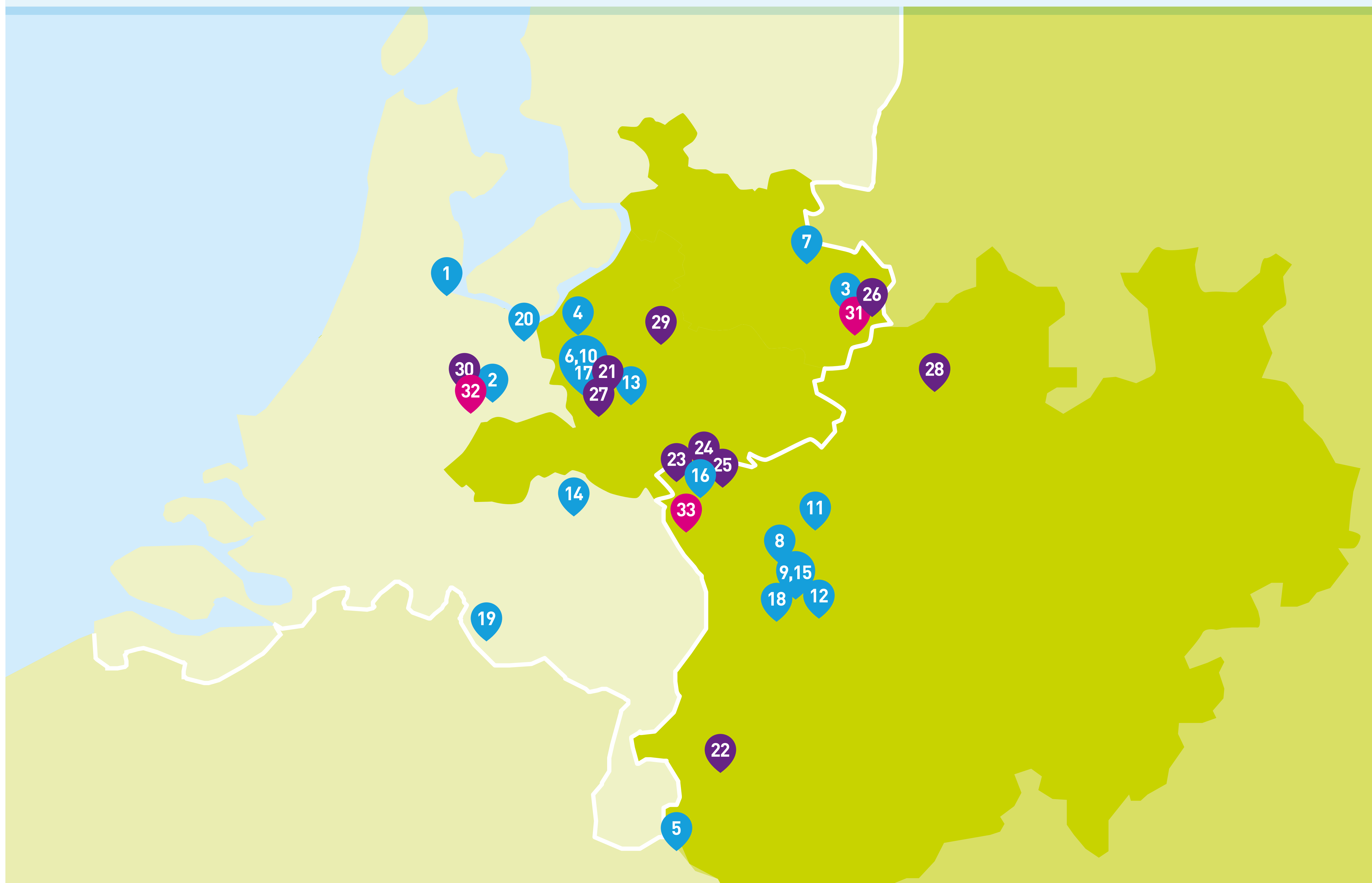
- 6 Big data Architecture
- 7 Precision Agriculture System
- 8 Software for Object Recognition
- 9 Vegetation Mapping & Monitoring Services
- 10 Flying Microscope

## Project funnel

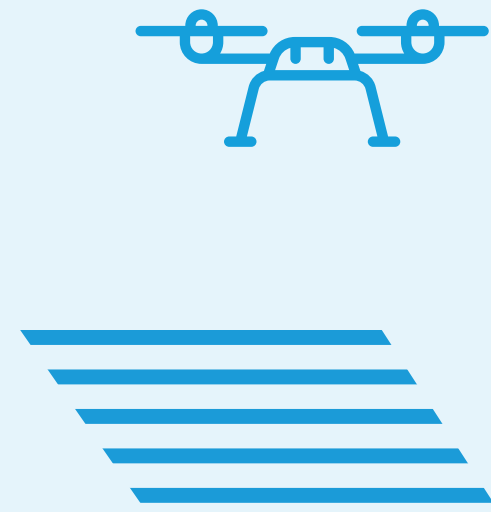
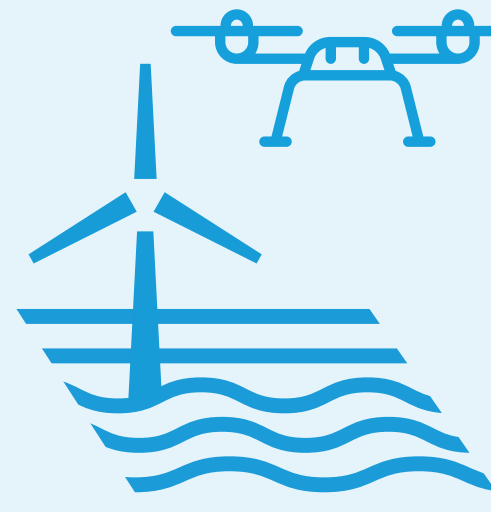
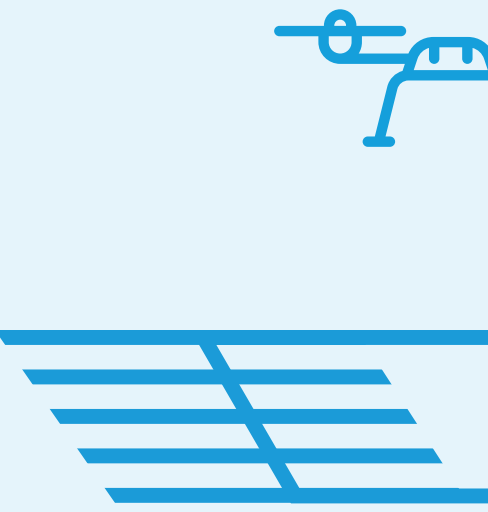
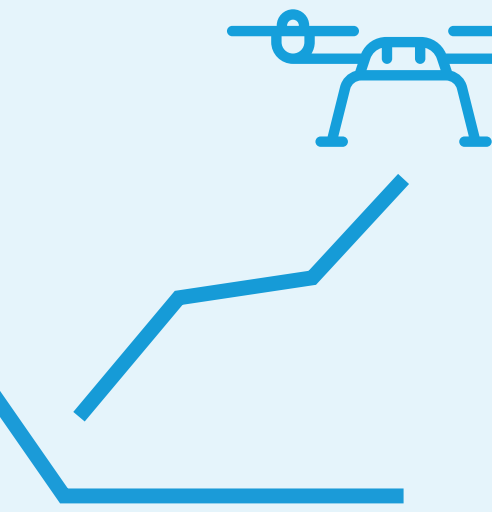


## Participating companies

- |   |                                   |  |
|---|-----------------------------------|--|
| 1 <b>Aerovision</b> / Naarden               | 13 <b>KnowH2O</b> / Berg en Dal   | 21 <b>Alterra</b> / Wageningen                                     |
| 2 <b>Bureau Waardenburg</b> / Culemborg     | 14 <b>Obtrasec</b> / Volkel       | 22 <b>Forschungszentrum Jülich</b> / Jülich                        |
| 3 <b>ClearFlightSolutions</b> / Enschede    | 15 <b>PVA mBH</b> / Kamp-Lintfort | 23 <b>Hochschule Rhein-Waal</b> / Kleve                            |
| 4 <b>Drone4agro</b> / Voorthuizen           | 16 <b>RheWaTech</b> / Kalkar      | 24 <b>Naturschutzzentrum im Kreis Kleve e.V</b> / Rees             |
| 5 <b>Dronespective</b> / Aachen             | 17 <b>Soilcares</b> / Wageningen  | 25 <b>Regionalforstamt Niederrhein</b> / Wesel                     |
| 6 <b>Eagleview</b> / Wageningen             | 18 <b>T. Römer</b> / Moers        | 26 <b>University of Twente</b> / Enschede                          |
| 7 <b>Geinfosolutions</b> / Almelo           | 19 <b>Van den Borne</b> / Reusel  | 27 <b>Wageningen UR</b> / Wageningen                               |
| 8 <b>GeSa</b> / Alpen                       | 20 <b>XpStagers</b> / Amersfoort  | 28 <b>Landwirtschaftskammer Nordrhein-Westfalen(NRW)</b> / Münster |
| 9 <b>IMST</b> / Kamp- Lintfort              |                                   | 29 <b>Oost NL</b> / Apeldoorn                                      |
| 10 <b>Innosive Diagnostics</b> / Wageningen |                                   | 30 <b>KWR Watercycle Research Institute BV</b> / Nieuwegein        |
| 11 <b>ISIS-IC</b> / Wesel                   |                                   | Testcentra:  |
| 12 <b>Jalasca</b> / Moers                   |                                   | 31 <b>Space53</b> / Enschede Airport                               |
|   |                                   | 32 <b>ProRail</b> / Utrecht  |
|   |                                   | 33 <b>Airport Weeze</b> / Weeze                                    |



## Workinggroups

 <h3>Agriculture</h3>	 <h3>Natural resources</h3>	 <h3>Technology</h3>	 <h3>Business development</h3>
<ul style="list-style-type: none"> <li>· HSRW</li> <li>· LWK Haus Riswick</li> <li>· KWR</li> <li>· KnowH2O</li> <li>· Wald und Holz NRW</li> <li>· EagleView</li> <li>· ISIS-IC</li> <li>· WUR</li> <li>· SoilCares Research</li> <li>· Drone4Agro</li> </ul>	<ul style="list-style-type: none"> <li>· HSRW</li> <li>· KWR</li> <li>· KnowH2O</li> <li>· Wald und Holz NRW</li> <li>· EagleView</li> <li>· ISIS-IC</li> <li>· WUR</li> <li>· SoilCares Research</li> <li>· Alterra</li> <li>· FZ Jülich</li> <li>· NZ Kleve</li> <li>· Bureau Waardenburg</li> </ul>	<ul style="list-style-type: none"> <li>· HSRW</li> <li>· Obtrasec</li> <li>· Universiteit Twente</li> <li>· IMST GmbH</li> <li>· EagleView</li> <li>· ISIS-IC</li> <li>· Gesa mbH</li> <li>· Jaldasca GmbH</li> <li>· SoilCares Research</li> <li>· Clearflightsolutions</li> <li>· FZ Jülich</li> <li>· Drone4Agro</li> <li>· Roemer</li> <li>· PV Ansperger mbH</li> <li>· Innosieve</li> </ul>	<p>To gain the maximum success out of innovative ideas and products.</p> <ul style="list-style-type: none"> <li>· Oost NL</li> <li>· Obtrasec</li> <li>· ISIS-IC</li> <li>· Innosieve</li> <li>· Rhewatech</li> <li>· Clear Flight Solutions</li> </ul>

